



**GORDON  
JOHNSON**

*Architecture*



ADDENDUM #2:

DATE: April 9, 2026

JOB: FTCC - HTC Building – 1<sup>st</sup> Floor Surgical Lab Renovation; APN 2523

OWNER: Fayetteville Technical Community College

ARCHITECT: Gordon Johnson Architecture

---

The following items or modifications to the original Plans and Specifications shall be included as part of the contract work. All General Conditions, Supplemental General Conditions, or Special Conditions shall remain as originally specified unless otherwise noted herein.

Respective Bidders shall include the provisions of this Addendum in their proposal and shall make a notation in the proposal that these provisions have been included.

---

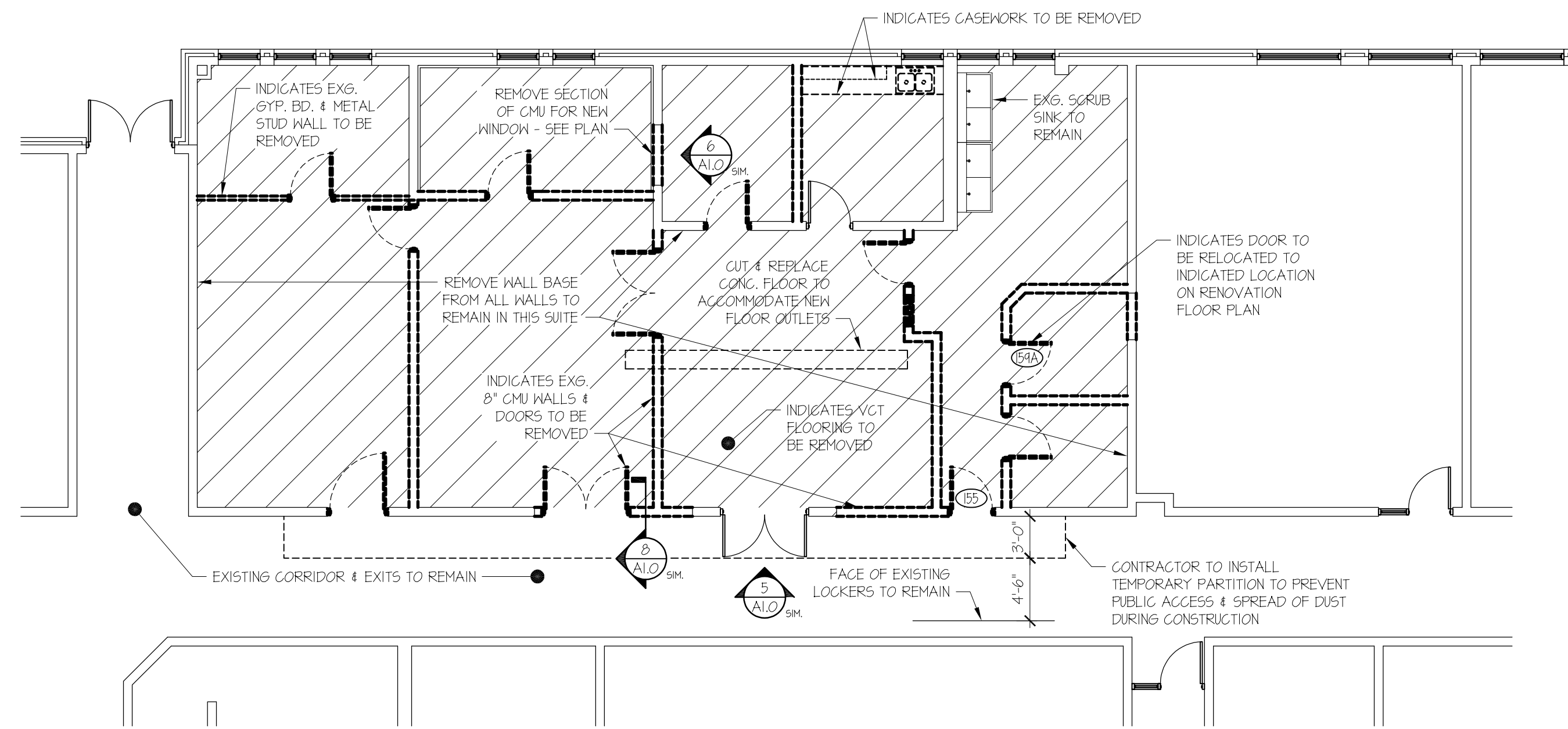
#### **GENERAL**

- 1) The temporary wall described on the demolition plan will need to be constructed from non-flammable material similar to metal studs and gypsum board. The temporary wall door accessing the space behind the wall may be constructed of any material.
- 2) The masonry walls described “to be removed” on the demolition plan are assumed to be sitting on the concrete floors (not embedded in the floor cavity. Should it be discovered otherwise, the concrete floor repair costs will be negotiated using the contingency allowance.
- 3) The existing fire alarm system is by Edwards Fire Alarm Systems. There is no plan for new devices just relocating two of the existing smoke detectors. FTCC will assist the contractor setting the fire alarm in “test mode” each time the contractor works in the space.

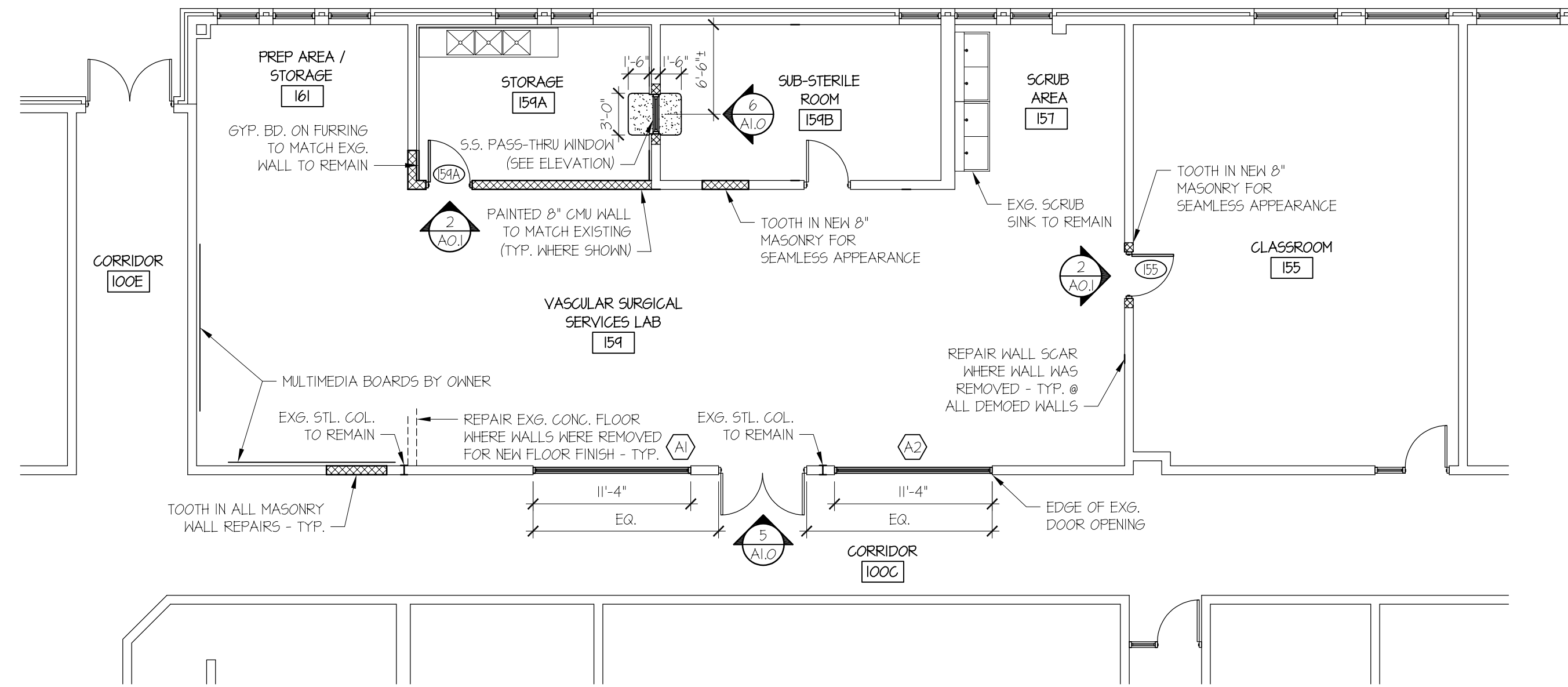
#### **ARCHITECTURAL DRAWINGS**

- 1) Sheet A1.0: Drawing Details 5 & 8/A1.0; the storefront base shown on these details has been changed to 4 ½” square anodized aluminum tube with the window frame sitting on top of this base. The base material should be provided by the storefront window supplier. The storefront window jambs against the masonry walls should also be of same material described by the note on detail 8/A1.0 (see attached revised drawing sheet)
- 2) Sheet A1.0: Drawing Detail 7/A1.0; the solid surfacing material described in this detail shall be Wilsonart 9210CM Europa or approved equal (see attached revised drawing sheet).

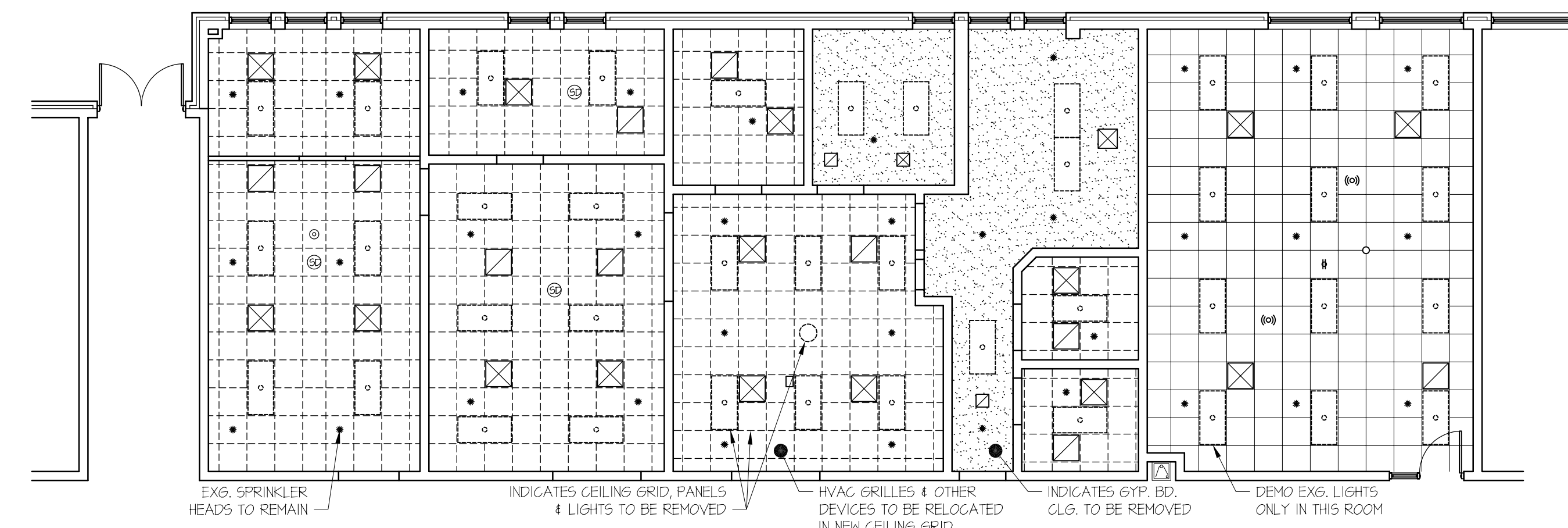
End of Addendum #2



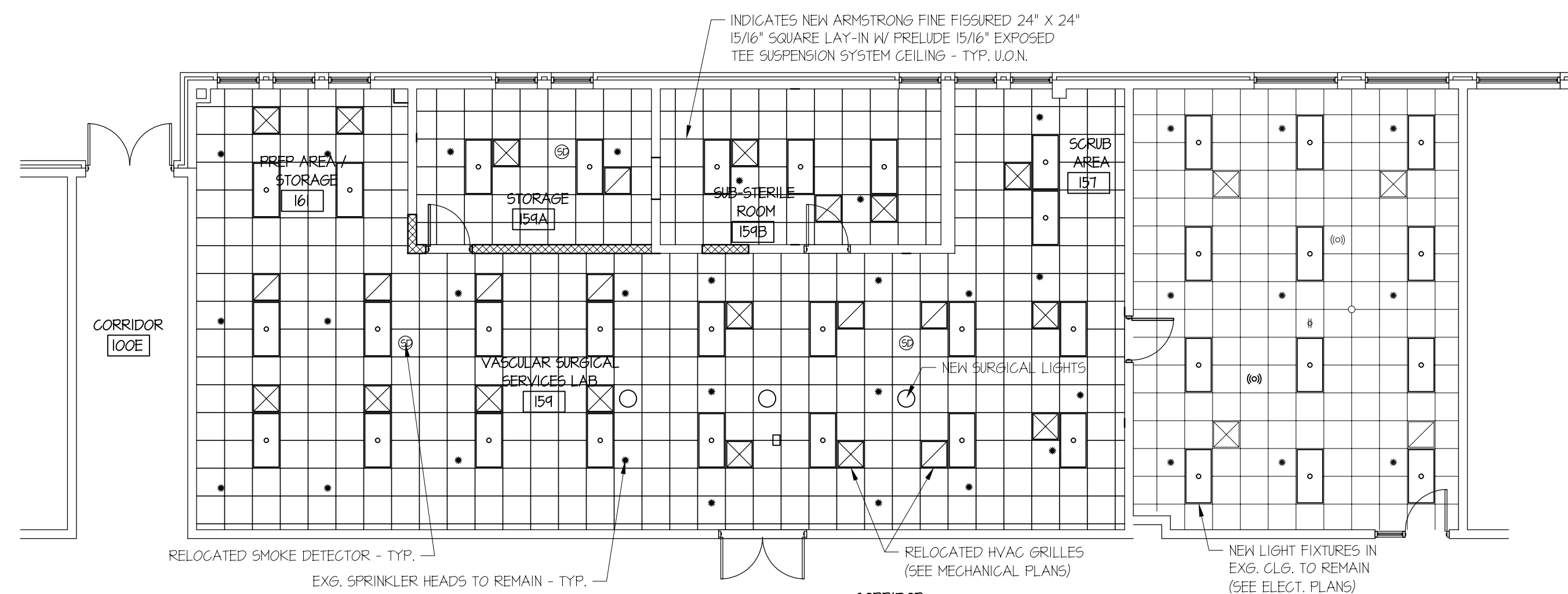
**2 DEMOLITION FLOOR PLAN**  
1/8" = 1'-0"



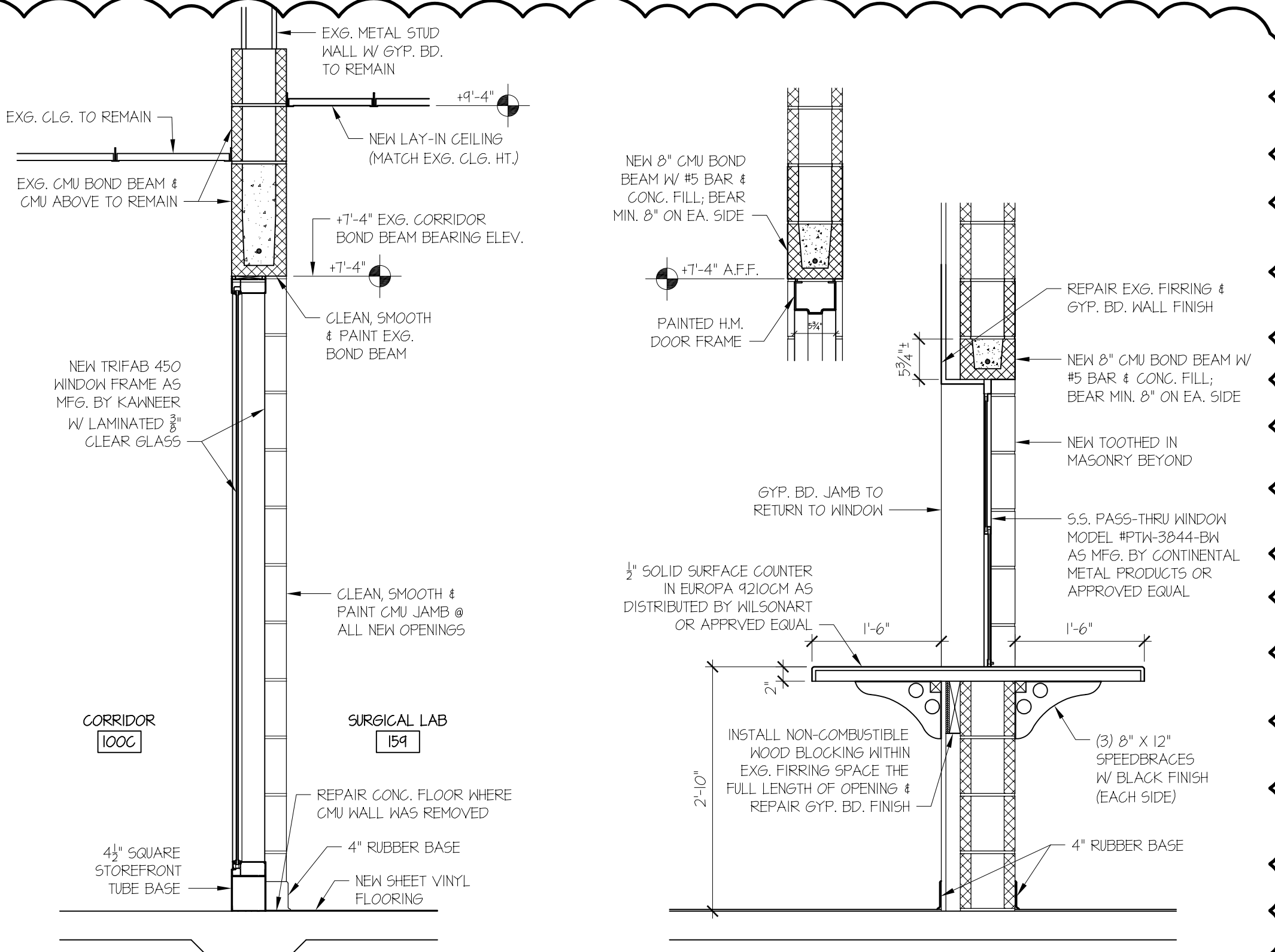
**1 RENOVATION FLOOR PLAN**  
1/8" = 1'-0"



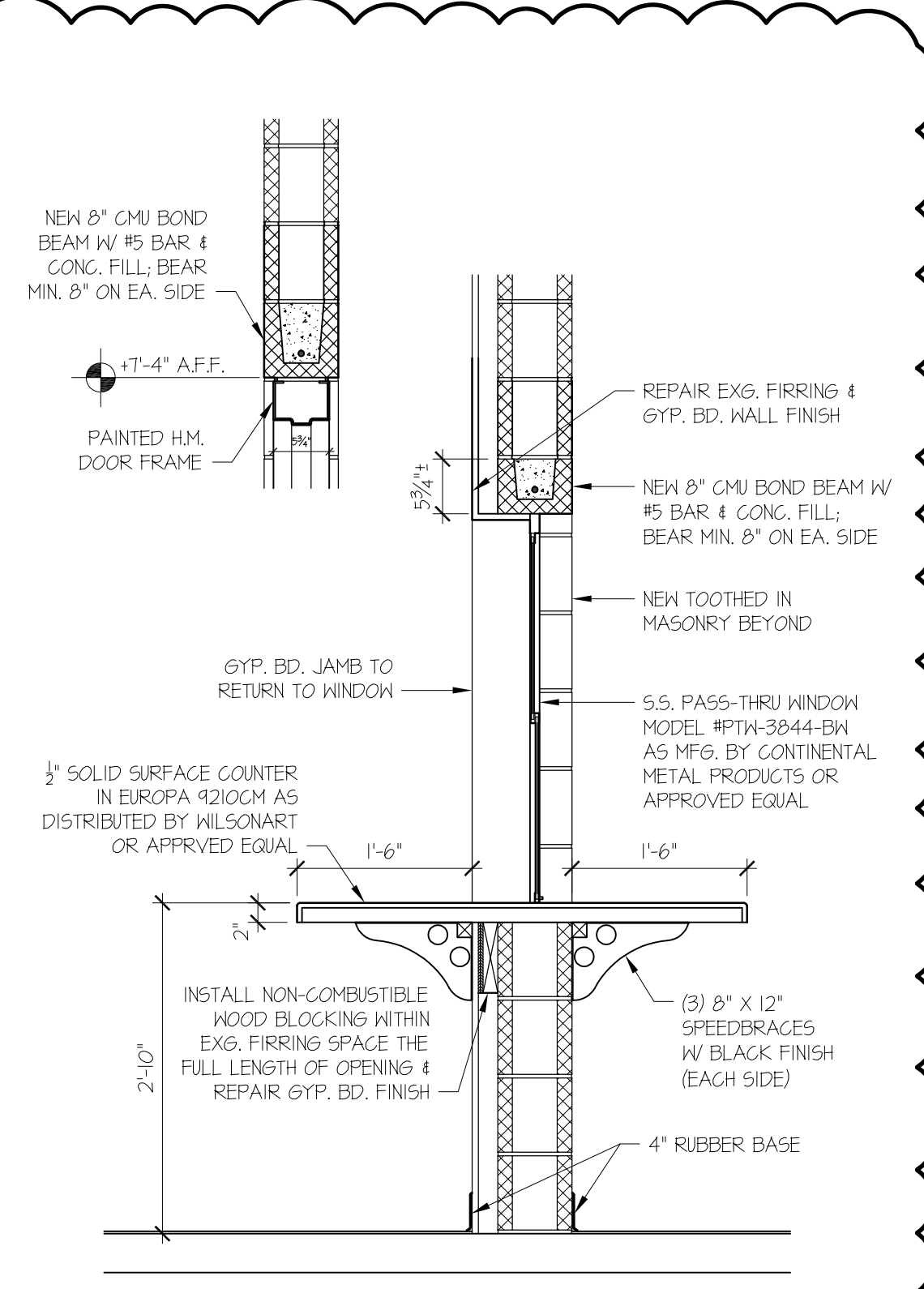
**4 REFLECTED CEILING DEMOLITION PLAN**  
1/8" = 1'-0"



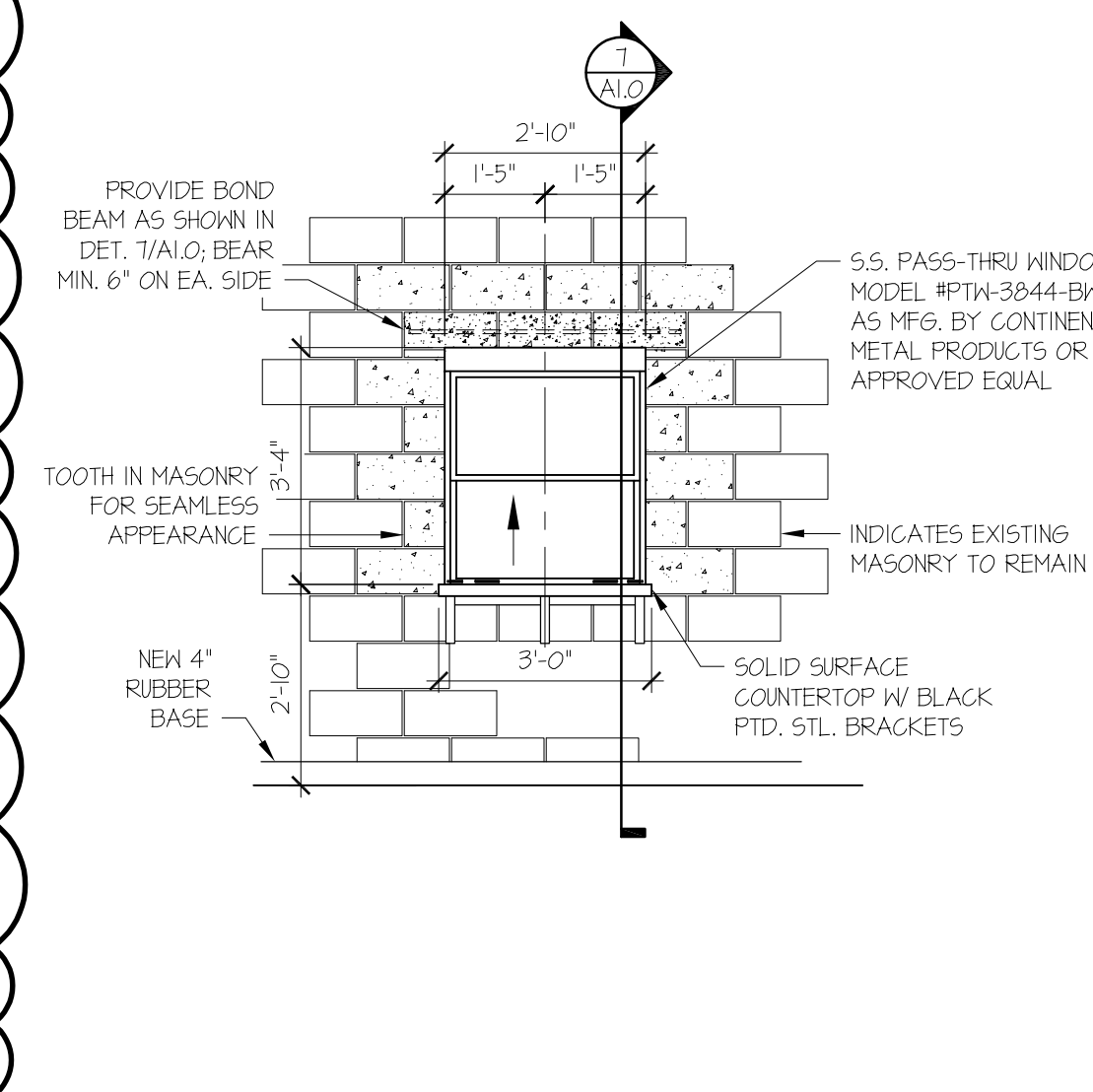
**3 REFLECTED CEILING RENOVATION PLAN**  
1/8" = 1'-0"



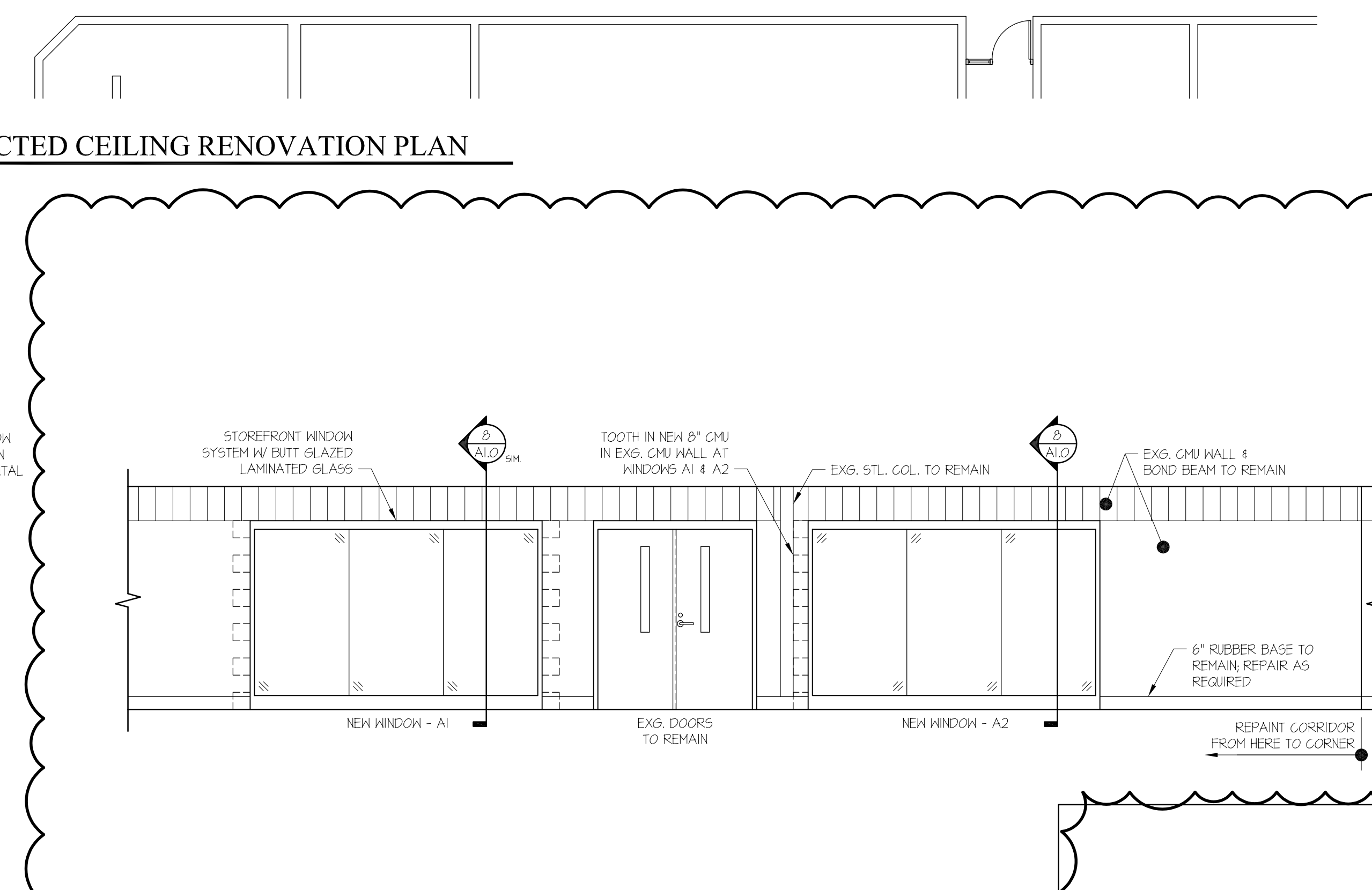
**8 SECTION @ CORRIDOR WINDOW**  
3/4" = 1'-0"



**7 SECTION @ NEW DOOR / WINDOW**  
3/4" = 1'-0"



**6 WINDOW ELEVATION**  
3/8" = 1'-0"



**5 INTERIOR ELEVATION @ CORRIDOR 100C**  
1/4" = 1'-0"